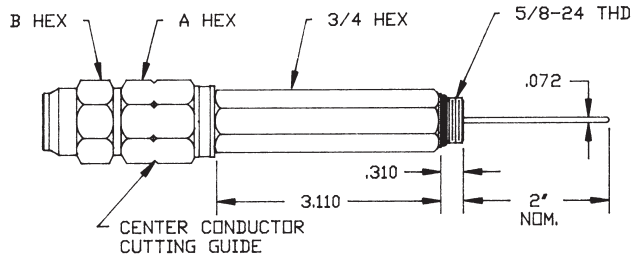


2-Piece Pin Type Extension

**“K” Series  
Two Piece  
Pin Type Extensions**

5/8" – 24 2 piece extended entry connectors with auto seize technology for enhanced cable seizure. 2" pin and center conductor cutting guide are standard. Common hex size per connector with tapered back nut for consistent heat shrink application. Re-enterable and reusable. Available in 3", 6" and 9" lengths.



For more information or to place an order, please contact Supply Solutions at 866-978-7759.

PDF courtesy of Thomas & Betts.

**Ordering Information**

| CABLE TYPE            | CATALOG NUMBER | CENTER COND | CABLE OD | DIM A  | DIM B  | INNER PACK | OUTER PACK |
|-----------------------|----------------|-------------|----------|--------|--------|------------|------------|
| <b>P3 &amp; T10</b>   | EI412K3LB      | .092        | .412     | 13/16  | 7/8    | 25         | 100        |
|                       | EI500K3LB      | .109        | .500     | 1      | 1      | 20         | 80         |
|                       | EI625K3LB      | .137        | .625     | 1      | 1      | 20         | 80         |
|                       | EI750K3LB      | .167        | .750     | 1-1/8  | 1-1/8  | 16         | 64         |
|                       | EI875K3LB      | .194        | .875     | 1-3/8  | 1-3/8  | 9          | 36         |
| <b>QR</b>             | EI1000K3LB     | .220        | 1.000    | 1-1/2  | 1-1/2  | 9          | 36         |
|                       | EI500QRLB      | .117        | .580     | 1      | 1      | 20         | 80         |
|                       | EI540QRLB      | .124        | .610     | 1      | 1      | 20         | 80         |
|                       | EI715QRLB      | .166        | .785     | 1-3/16 | 1-3/16 | 14         | 56         |
|                       | EI860QRLB      | .203        | .960     | 1-1/2  | 1-1/2  | 9          | 36         |
| <b>TX</b>             | EI1125QRLB     | .263        | 1.225    | 1-3/4  | 1-3/4  | 6          | 24         |
|                       | EI565TXLB      | .129        | .565     | 1      | 1      | 20         | 80         |
|                       | EI700TXLB      | .163        | .703     | 1-1/8  | 1-1/8  | 14         | 56         |
|                       | EI840TXLB      | .194        | .840     | 1-3/8  | 1-3/8  | 9          | 36         |
| <b>MC<sup>2</sup></b> | EI1160TXLB     | .269        | 1.160    | 1-3/4  | 1-3/4  | 6          | 24         |
|                       | EI440MC2LB     | .105        | .450     | 1      | 1      | 20         | 80         |
|                       | EI500MC2LB     | .123        | .510     | 1      | 1      | 20         | 80         |
|                       | EI650MC2LB     | .156        | .640     | 1-1/8  | 1-1/8  | 16         | 64         |
|                       | EI750MC2LB     | .185        | .760     | 1-1/8  | 1-1/8  | 16         | 64         |
| <b>P1</b>             | EI1000MC2LB    | .248        | 1.015    | 1-1/2  | 1-1/2  | 9          | 36         |
|                       | EI412KLB       | .080        | .412     | 13/16  | 7/8    | 25         | 100        |
|                       | EI500KLB       | .100        | .500     | 1      | 1      | 20         | 80         |
|                       | EI750KLB       | .148        | .750     | 1-1/8  | 1-1/8  | 16         | 64         |

NOTE: FOR 3" EXTENSION, PART NUMBER ENDS IN LB AS SHOWN IN ABOVE TABLE

FOR 6" EXTENSION, ADD 6 TO END OF PART NUMBER. FOR EXAMPLE, EI500QRLB6.

FOR 9" EXTENSION, ADD 9 TO END OF PART NUMBER: FOR EXAMPLE, EI500QRLB9