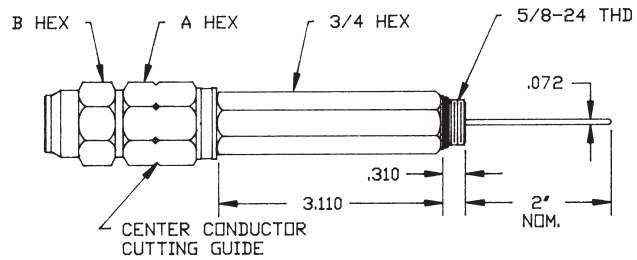


2-Piece Pin Type Extension

**“K” Series
Two Piece
Pin Type Extensions**

5/8" – 24 2 piece extended entry connectors with auto seize technology for enhanced cable seizure. 2" pin and center conductor cutting guide are standard. Common hex size per connector with tapered back nut for consistent heat shrink application. Re-enterable and reusable. Available in 3", 6" and 9" lengths.



For more information or to place an order, please contact Supply Solutions at 866-978-7759.

PDF courtesy of Thomas & Betts.

Ordering Information

CABLE TYPE	CATALOG NUMBER	CENTER COND	CABLE OD	DIM A	DIM B	INNER PACK	OUTER PACK
P3 & T10	EI412K3LB	.092	.412	13/16	7/8	25	100
	EI500K3LB	.109	.500	1	1	20	80
	EI625K3LB	.137	.625	1	1	20	80
	EI750K3LB	.167	.750	1-1/8	1-1/8	16	64
	EI875K3LB	.194	.875	1-3/8	1-3/8	9	36
	EI1000K3LB	.220	1.000	1-1/2	1-1/2	9	36
QR	EI500QRLB	.117	.580	1	1	20	80
	EI540QRLB	.124	.610	1	1	20	80
	EI715QRLB	.166	.785	1-3/16	1-3/16	14	56
	EI860QRLB	.203	.960	1-1/2	1-1/2	9	36
	EI1125QRLB	.263	1.225	1-3/4	1-3/4	6	24
TX	EI565TXLB	.129	.565	1	1	20	80
	EI700TXLB	.163	.703	1-1/8	1-1/8	14	56
	EI840TXLB	.194	.840	1-3/8	1-3/8	9	36
	EI1160TXLB	.269	1.160	1-3/4	1-3/4	6	24
MC²	EI440MC2LB	.105	.450	1	1	20	80
	EI500MC2LB	.123	.510	1	1	20	80
	EI650MC2LB	.156	.640	1-1/8	1-1/8	16	64
	EI750MC2LB	.185	.760	1-1/8	1-1/8	16	64
	EI1000MC2LB	.248	1.015	1-1/2	1-1/2	9	36
P1	EI412KLB	.080	.412	13/16	7/8	25	100
	EI500KLB	.100	.500	1	1	20	80
	EI750KLB	.148	.750	1-1/8	1-1/8	16	64

NOTE: FOR 3" EXTENSION, PART NUMBER ENDS IN LB AS SHOWN IN ABOVE TABLE

FOR 6" EXTENSION, ADD 6 TO END OF PART NUMBER. FOR EXAMPLE, EI500QRLB6.

FOR 9" EXTENSION, ADD 9 TO END OF PART NUMBER: FOR EXAMPLE, EI500QRLB9