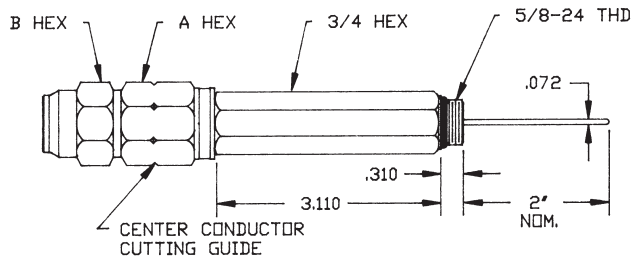


2-Piece Pin Type Extension

**“K” Series  
Two Piece  
Pin Type Extensions**

5/8" – 24 2 piece extended entry connectors with auto seize technology for enhanced cable seizure. 2" pin and center conductor cutting guide are standard. Common hex size per connector with tapered back nut for consistent heat shrink application. Re-enterable and reusable. Available in 3", 6" and 9" lengths.



**Ordering Information**

CABLE TYPE	CATALOG NUMBER	CENTER COND	CABLE OD	DIM A	DIM B	INNER PACK	OUTER PACK
<b>P3 &amp; T10</b>	EI412K3LB	.092	.412	13/16	7/8	25	100
	EI500K3LB	.109	.500	1	1	20	80
	EI625K3LB	.137	.625	1	1	20	80
	<b>EI750K3LB</b>	<b>.167</b>	<b>.750</b>	<b>1-1/8</b>	<b>1-1/8</b>	<b>16</b>	<b>64</b>
	EI875K3LB	.194	.875	1-3/8	1-3/8	9	36
	EI1000K3LB	.220	1.000	1-1/2	1-1/2	9	36
<b>QR</b>	EI500QRLB	.117	.580	1	1	20	80
	EI540QRLB	.124	.610	1	1	20	80
	EI715QRLB	.166	.785	1-3/16	1-3/16	14	56
	EI860QRLB	.203	.960	1-1/2	1-1/2	9	36
	EI1125QRLB	.263	1.225	1-3/4	1-3/4	6	24
<b>TX</b>	EI565TXLB	.129	.565	1	1	20	80
	EI700TXLB	.163	.703	1-1/8	1-1/8	14	56
	EI840TXLB	.194	.840	1-3/8	1-3/8	9	36
	EI1160TXLB	.269	1.160	1-3/4	1-3/4	6	24
<b>MC<sup>2</sup></b>	EI440MC2LB	.105	.450	1	1	20	80
	EI500MC2LB	.123	.510	1	1	20	80
	EI650MC2LB	.156	.640	1-1/8	1-1/8	16	64
	EI750MC2LB	.185	.760	1-1/8	1-1/8	16	64
	EI1000MC2LB	.248	1.015	1-1/2	1-1/2	9	36
<b>P1</b>	EI412KLB	.080	.412	13/16	7/8	25	100
	EI500KLB	.100	.500	1	1	20	80
	EI750KLB	.148	.750	1-1/8	1-1/8	16	64

NOTE: FOR 3" EXTENSION, PART NUMBER ENDS IN LB AS SHOWN IN ABOVE TABLE

FOR 6" EXTENSION, ADD 6 TO END OF PART NUMBER. FOR EXAMPLE, EI500QRLB6.

FOR 9" EXTENSION, ADD 9 TO END OF PART NUMBER: FOR EXAMPLE, EI500QRLB9



For more information or to place an order, please contact Supply Solutions at 866-978-7759.

PDF courtesy of Thomas & Betts.