



[Catalog Home](#)

Product Datasheet

ANDERSON FARGO

**GLS5001 -- Automatic Splice**



Automatic Splice, Full Tension, for 5/16" HS, Common, Utilities, Siemens-Martin guy grades

**Product Specifications**



Splice Type

For more information or to place an order, please contact Supply Solutions at 866-978-7759. Courtesy of Hubbell Power Systems.



Automatic  
Splices

Automatic Splice Series



GLS Series  
Automatic Splice  
Guy Wire  
HS, Common, Utilities,  
Siemens-Martin

PDF Catalog Page

Click [HERE](#) to view PDF Catalog.

Conductor Type

HS, Siemens-Martin, Common, Utilities

Conductor Diameter (Minimum)

0.310 in

Conductor Diameter (Maximum)

0.335 in

Automatic Conductor Range

5/16" HS guy wire  
5/16" Utilities guy wire  
5/16" Siemens-Martin guy wire  
5/16" Common guy wire

Material

Aluminum

Gripper Material

Plated Steel

Minimum Conductor Diameter

0.310 in

Maximum Conductor Diameter

0.335 in

Outside Diameter

0.310 - 0.335 in (7.89 - 8.53 mm)

<b>Dimension A</b>	7.4 in (186 mm)
<b>Dimension B</b>	1.1 in (28 mm)
<b>UL Listed</b>	No
<b>Inhibitor Loaded</b>	Yes
<b>Color Code</b>	None
<b>Material Type</b>	Standard
<b>UPC Code</b>	09635936353
<b>Standard Package</b>	50
<b>Standard Package Unit</b>	Each
<b>Min Order Qty</b>	50
<b>Weight / Ea.</b>	0.657 lbs

**Notes**

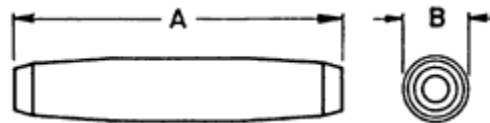
Consult Factory for conductor sizes not listed.

**Features**

Individually bagged to seal out dirt before use.

**Compressed Product Number**

GLS5001



Ref Dimension A & B

[Catalog Home](#)



[Warranty Info](#) | [Trademarks](#) | [Terms of Use](#)

*All contents Copyright © 2007 Hubbell Power Systems, Inc. All rights reserved.*

NOTE: Because Hubbell has a policy of continuous product improvement, we reserve the right to change design and specifications without notice.



For more information or to place an order,  
please contact Supply Solutions at  
866-978-7759.  
Courtesy of Hubbell Power Systems.